



GOVT. COLLEGE FOR WOMEN, BADHRA

(Affiliated to Ch. Bansi Lal University, Bhiwani, AISHE Code: C-51945)

Address: Dhigawa Road, Badhra, Ch. Dadri, Haryana, PIN: 127308

Tel.: 01252-253036, E-Mail: gcwbadhra@gmail.com, Website: <http://www.gcwbadhra.ac.in>



Index (Supporting 6.2.1)

S. No.	Details given	Page No./Link
1.	Organogram depicting the functioning and decentralization of the institution	1
2.	IQAC meeting Link	http://gcwbadhra.ac.in/images/18/MultipleFiles/File25710.pdf
3.	Feedback collected, analysed and action taken report on website	http://gcwbadhra.ac.in/images/18/MultipleFiles/File25529.pdf
4.	Participation of prayaas ranking	http://gcwbadhra.ac.in/images/18/MultipleFiles/File25550.pdf
5.	Time Table 2018-19	http://gcwbadhra.ac.in/images/18/MultipleFiles/File25613.pdf
6.	Time Table 2019-20	http://gcwbadhra.ac.in/images/18/MultipleFiles/File24690.pdf
7.	Time Table 2020-21	http://gcwbadhra.ac.in/images/18/MultipleFiles/File24692.pdf
8.	Time Table 2021-22	http://gcwbadhra.ac.in/images/18/MultipleFiles/File24693.pdf
9.	Time Table 2022-23	http://gcwbadhra.ac.in/images/18/MultipleFiles/File24694.pdf
10	Time Table 2023-24	http://gcwbadhra.ac.in/images/18/MultipleFiles/File24695.pdf
11	Lesson Plan, Odd Semester, 2022-23	http://gcwbadhra.ac.in/images/18/MultipleFiles/File24696.pdf
12	Lesson Plan, Even Semester, 2022-23	http://gcwbadhra.ac.in/images/18/MultipleFiles/File24697.pdf
13	Lesson Plan, Odd Semester, 2023-24	http://gcwbadhra.ac.in/images/18/MultipleFiles/File25262.pdf
14	Lesson Plan, Even Semester, 2023-24	http://gcwbadhra.ac.in/images/18/MultipleFiles/File25263.pdf
15	Program Outcomes	http://gcwbadhra.ac.in/images/18/MultipleFiles/File25564.pdf
16	Result 2018-19	http://gcwbadhra.ac.in/images/18/MultipleFiles/File25494.pdf
17	Result 2019-20	http://gcwbadhra.ac.in/images/18/MultipleFiles/File25497.pdf
18	Result 2020-21	http://gcwbadhra.ac.in/images/18/MultipleFiles/File25498.pdf
19	Result 2021-22	http://gcwbadhra.ac.in/images/18/MultipleFiles/File25499.pdf
20	Result 2022-23	http://gcwbadhra.ac.in/images/18/MultipleFiles/File25500.pdf



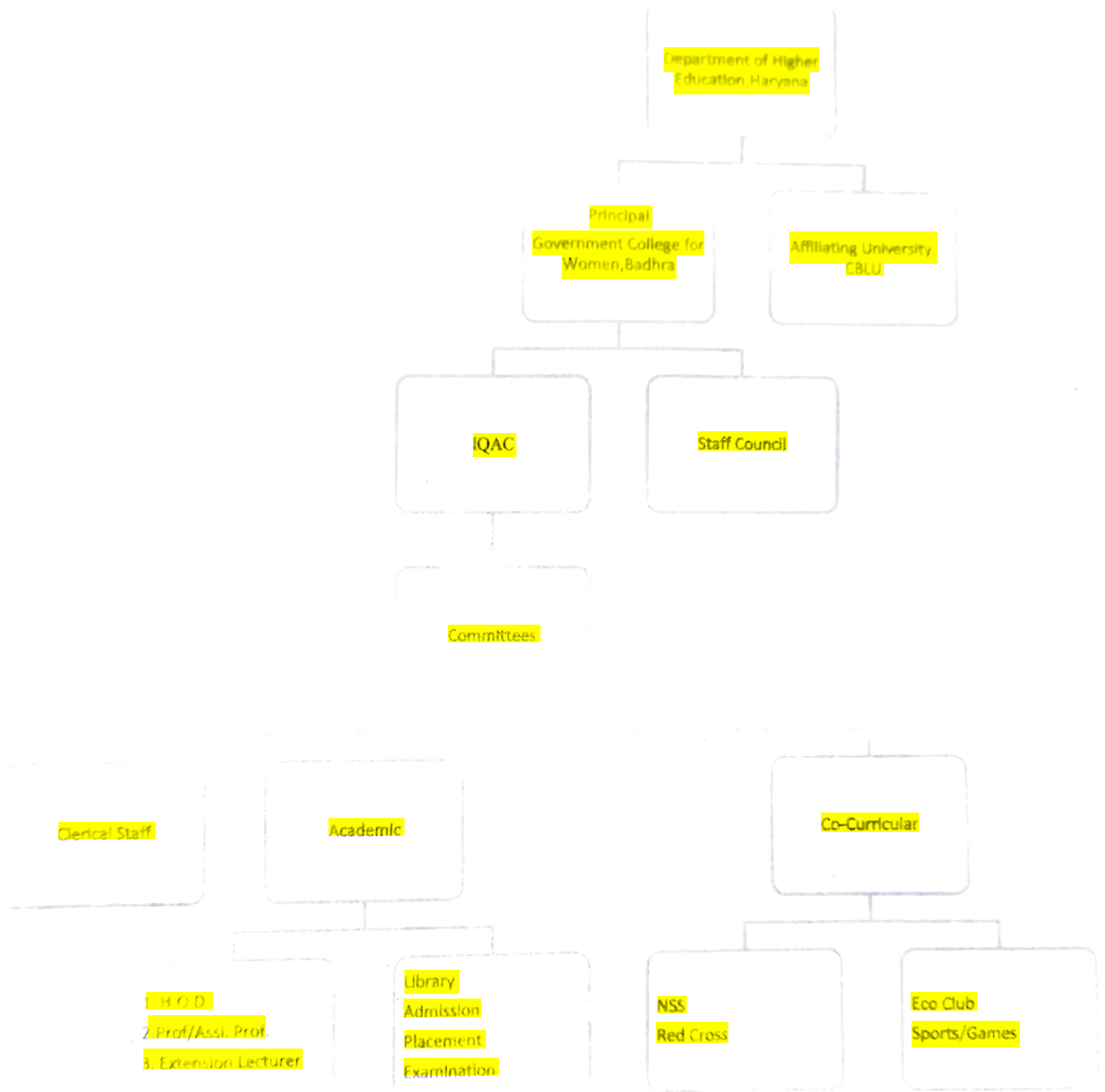
GOVT. COLLEGE FOR WOMEN, BADHRA
 (Affiliated to Ch. Bansi Lal University, Bhiwani, AISH Code C-51945)
 Address: Dhigawa Road, Badhra, Ch. Dadri, Haryana, PIN: 127308
 Tel: 01282-253036 / Mail: gcwbadhra@gmail.com Website: http://www.gcwbadhra.ac.in



Ref.no... NAAC / GCHR / 621

Dated... 12/08/2024

Organogram depicting the functioning and decentralization of the Institution



Principal,
 Govt. College for Women
 Badhra (Ch. Dadri)